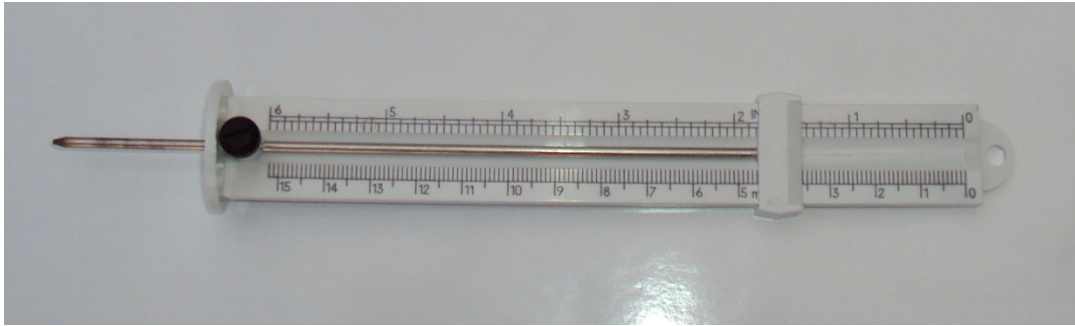


Economy Infill Depth Gauge Instructions



Economy Model Infill Depth Gauge - IDG2-M
Measures from 0 to 6 inches or 0 to 15 cm
High impact plastic and Stainless Steel probe
Weight - 1.0 oz

Instructions

1. Turn black knob to loosen depth gauge.
2. Place white foot plate firmly on infill surface
3. Slide center shaft down until it makes contact with carpet backing
4. Lift out and read gauge in inches or millimeters
5. Note, you should check 2 or 3 areas at each location to get the average infill for that test area.
6. Test wear areas more frequently as these areas are usually where the infill is dispersed more frequently.

Also keep in mind that infill does not break down, it often is just re-distributed to other areas of the playing surface. Proper grooming may even out the infill better than the addition of more infill.

IDG2-M - Economy Infill Depth Gauge