

## ULTRA JACK OPTIONS AND ACCESSORIES

MODELS #2002, @2004, #2008, #2009, #2006, #2012, #2024, #2013

## OPTIONS • ULTRA-JACK SYSTEM



### Ultra-Jack System Workbench

Model # 2004

The use of workbenches promotes efficiency and productivity, and this versatile unit can be installed at any time during the job without removing the jacks from the poles.

### Ultra-Jack Pole Anchor

Model # 2008

### Ultra-Jack Pole Base Model

Model # 2009

These unique self-locking bases and anchors are interchangeable, and provide added stability and security for use on all ground work surfaces.

### Ultra-Jack Aluminum & Rubber Pole

The reinforced structural grade aluminum/ rubber pole has field replaceable facing. Continuous metal reinforcing virtually eliminates rubber distortion.

- 6 foot pole **Model # 2006**
- 12 foot pole **Model # 2012**
- 24 foot pole **Model # 2024**
- 6 foot Aluminum Pole Connector **Model # 2013**

*Uses spring loaded pins made of stainless steel*

### Ultra-Jack System Brace

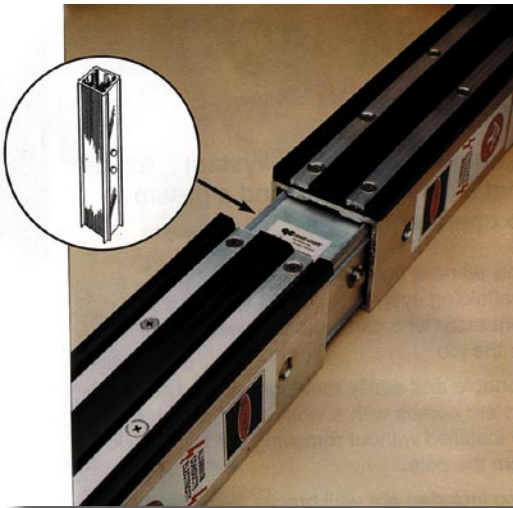
Model # 2009

Provides rigid, triangular bracing as required by OSHA, with full swivel head to accommodate all roof pitches.



### Ultra-Jack System Model # 2000

The Ultra-Jack System is unique, safe, durable and a dream to operate! This versatile, state-of-the-art system is perfect for the contractor who wants to promote worker speed and efficiency while providing the safest scaffolding available. The Ultra-Jack System is ultra safe, easily transported, easy to set up and take down, and has a greater climbing rate per stroke for faster movement and less worker fatigue. The easily adjusted work platform can be raised or lowered to the perfect height, eliminating overreaching and uncomfortable positions. The pump jack mechanism uses a spring-loaded cam lock for smooth operation, and there's no clutch to wear out. Also included are wall braces (model #2002) with a swivel head to accommodate all roof pitches, and interchangeable pole anchors and bases to accommodate all ground surfaces. The System can be fitted with guardrails and a workbench that can be installed at any time during the job without removing the jacks from the poles. For extra comfort, the foot levers and hand cranks are padded, and the toe straps are big enough to accommodate large work boots.



© Copyright 2003 • Qual-Craft® Industries • 1551

Customer Support and Ordering Information

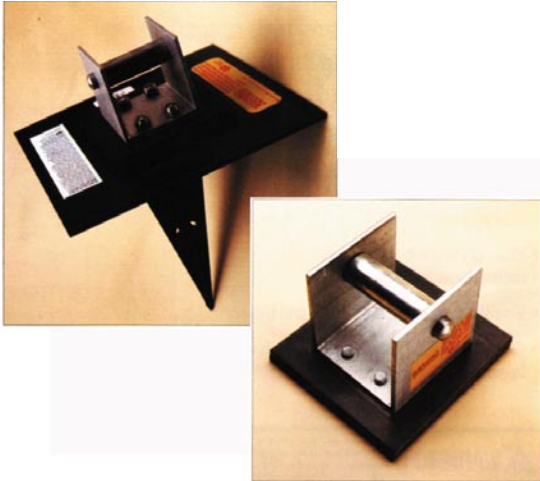
781-344-1000 • [www.qualcraft.com](http://www.qualcraft.com)

**qual-craft**  
INDUSTRIES, INC.

### Instructions for the use of the Ultra-Jack

#### Model #2008 Pole Anchor

#### Model #2009 Pole Base:



The Ultra-Jack Pole Anchor and Pole Base are designed to provide an appropriate mudsill and should be used in conjunction with an Ultra-Jack Pole Brace to secure the bottom of the pole. After determining the location, care should be taken to insure that the ground is firm and free of small rocks or other objects. The Ultra-Jack Model #2009 Pole Base should be used when the pole is to be installed on a paved, concrete or other hard packed surface. When installing on hard packed surface or pavement create a mudsill by placing one 1 ft. long 2"x 12" piece of lumber or equivalent under the Pole Base. The Ultra-Jack Model #2008 Pole Anchor should be used to secure the base of the pole to soft surfaces. The Anchor should be driven into the ground so that the 8"x 8" steel plate is resting completely on the ground and that the spike has been fully seated. The end of the Ultra-Jack Pole should be placed over the connector, the buttons depressed to allow the pole to seat firmly into the Pole Base or Anchor allowing the buttons to expand into the corresponding holes in the bottom of the pole. The presence of rocks or other objects or unlevelled ground conditions could prevent the anchor or base from being fully seated onto the ground. Soft or muddy surface areas may cause the pole to be unstable and could constitute an unsafe condition. Always inspect the entire systems installation prior to use to insure all components have been installed in accordance with instructions and that the systems installation is in compliance with Local, State and Federal OSHA regulations.



### INSTRUCTIONS FOR INSTALLATION AND USE MODEL #2002 ULTRA-JACK BRACE



**Installation of the Ultra-Jack Pole Brace:** 1) Position the pole along the work wall. Use a Qual-Craft Pole Anchor or Rubberized Base Plate at the bottom of the pole. Place pole on firm level ground. Do not use on unstable base, on top of other scaffolds or on roof surfaces. Using a Qual-Craft Ultra-Jack Brace, secure the pole to the work wall at the bottom and the top of the pole, and in between at 12 ft increments. Poles must be plumb. The rubber surface of the pole should face out from the work wall. The round bar of the brace should be fastened to the work wall at right angle to the pole. The angle bar of the brace should then be fastened to the right or left as desired. Fasten using two 2" or longer #12 wood screws per fastening plate. Always fasten to structural member ie: stud, rafter or joist. The spread

## ULTRA JACK OPTIONS AND ACCESSORIES

MODELS #2002, @2004, #2008, #2009,  
#2006, #2012, #2024, #2013

## ULTRA-JACK OPTIONS INSTRUCTIONS

between brace arms is 32" thus enabling installation on studs 16" on center. 2) Additional poles should be spaced based on the type and style walk plank used. Additional poles should be installed in the same manner as the first pole.

**To pass an Ultra-Jack Brace:** 1) When passing an Ultra-Jack Brace that is already installed, an extra brace should be installed approximately 4 feet above the one to be passed until the original brace is re-installed. 2) After installing the temporary brace, loosen the wing nut and allow the brace to be passed to swing clear of the pole. Do not remove from wall. After brace has been passed reconnect it to pole and remove the extra brace.

Care and use of the Ultra-Jack Scaffold System: 1) Prior to use the user should inspect the installation to insure that the system is properly set up and is ready for use. 2) An access ladder should be used to provide safe access to the work platform. 3) Ultra-Jack Scaffolding must not be used over 48 feet off the ground. 4) There should never be more than two people on an Ultra-Jack System between any two poles. 5) Only one walk plank shall be supported between any two poles. 6) Additional safety accessories such as guardrails, mid-rails, toe-boards, fall arrest or harness systems must be used as required by Local, State and Federal OSHA Regulations.



© Copyright 2003 • Qual-Craft® Industries • 1551

Customer Support and Ordering Information

**781-344-1000 • [www.qualcraft.com](http://www.qualcraft.com)**

 **qual·craft**  
INDUSTRIES, INC.