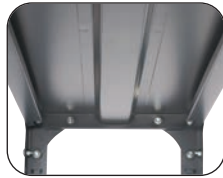


Heavy-Duty Industrial Steel Shelving

FEATURES:



Corner brackets to help prevent rocking and greatly improve stability and rigidity of overall unit.



Hat channel underneath every shelf increases overall strength. Helps in prevention of bowing and deflection due to overloading.



- box beam design with double-sided compression clips
- shelves adjustable in 1" increments
- six shelves per pack
- post kit includes four 85" high posts
- corner brackets and hat channel
- rated up to 1250 lbs. per shelf
- assembly required



Model	Description	Shelves	Dimensions W x D	Ship Weight	Price Each
6250	Industrial Shelf Pack	6	36 x 12"	49 lbs	\$170.00
6251	Industrial Shelf Pack	6	48 x 12"	63 lbs	235.00
6252	Industrial Shelf Pack	6	36 x 18"	62 lbs	197.00
6253	Industrial Shelf Pack	6	48 x 18"	81 lbs	278.00
6254	Industrial Shelf Pack	6	36 x 24"	75 lbs	240.00
6255	Industrial Shelf Pack	6	48 x 24"	99 lbs	311.00
6256	Industrial Post Kit		85½ High	24 lbs	126.00

Discount Code B