

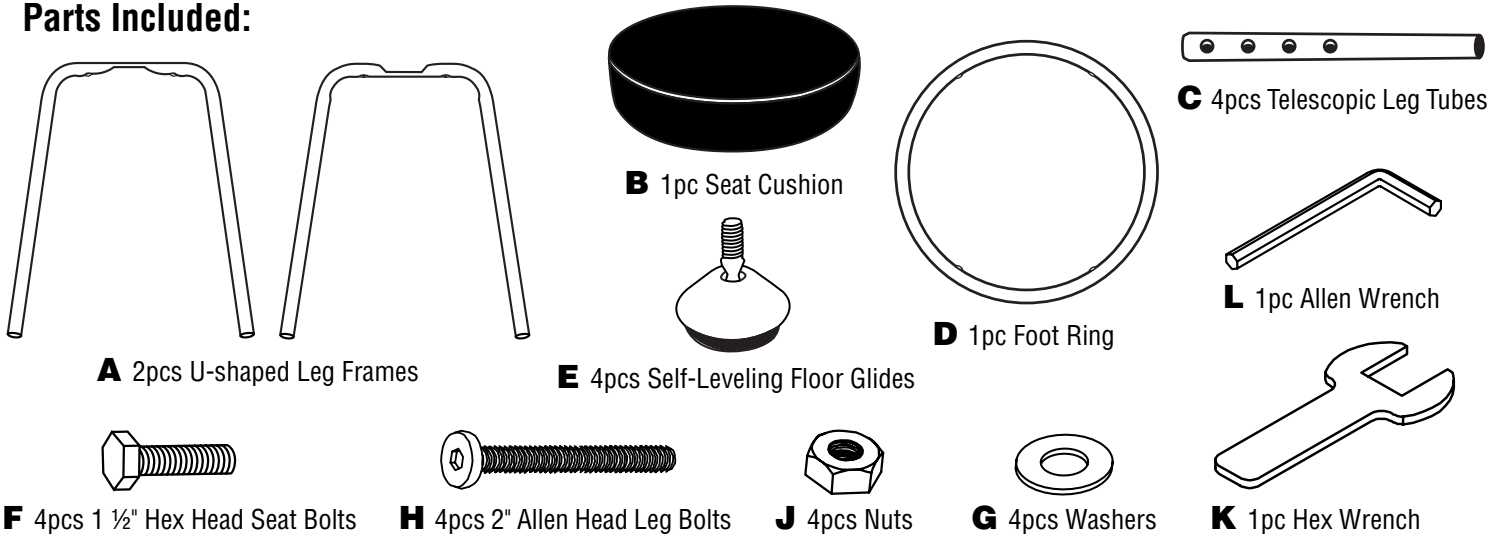


Spacesaver Stool

Assembly Instructions for Model No. SSAS

Tools required: Hex Wrench and Allen Wrench (included).

Parts Included:



Important: Keep all bolts loosely tightened during the assembly process. Tighten them all fully once the stool is completely assembled.

- 1** Unpack and inspect contents to confirm you have all parts listed above.
- 2** Place the seat cushion (**B**) upside down on a soft, clean surface. Use the 1 1/2" hex head seat bolts (**F**) with washers (**G**) to attach the U-shaped leg frames (**A**) to the bottom of the seat cushion. Note that the frames have a "crossover" design and are flattened in the center on one side only. These flat faces should be placed against one another for correct fit. Keep hex bolts slightly loose for now. See *Figure 1*.

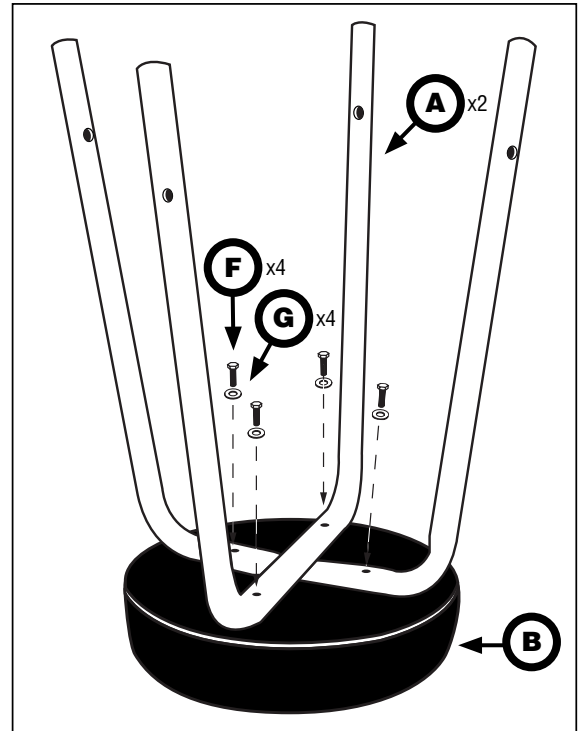


Figure 1

- 3** Screw a self-leveling floor glide (**E**) clockwise into the end of each telescopic leg tube (**C**). See *Figure 2*.

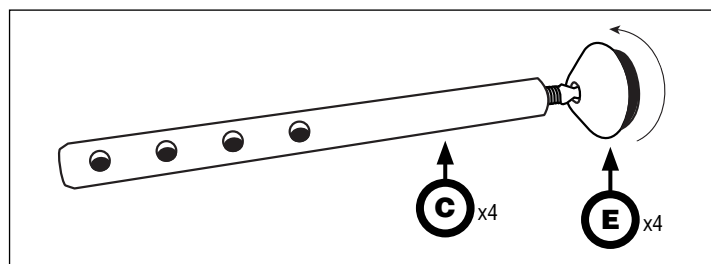


Figure 2

- 4** Slide a telescopic leg tube into the end of each U-shaped leg frame. Don't secure with leg bolts yet. However, now is the time to consider the desired seat height in preparation for the next step. Height can be set between 24" and 30" in 2" increments, depending on which adjustment hole in the telescopic leg tubes you use. Note: once the stool has been set at a certain height, it will need to be partially disassembled in order to change the height in the future. See **Figure 3**.

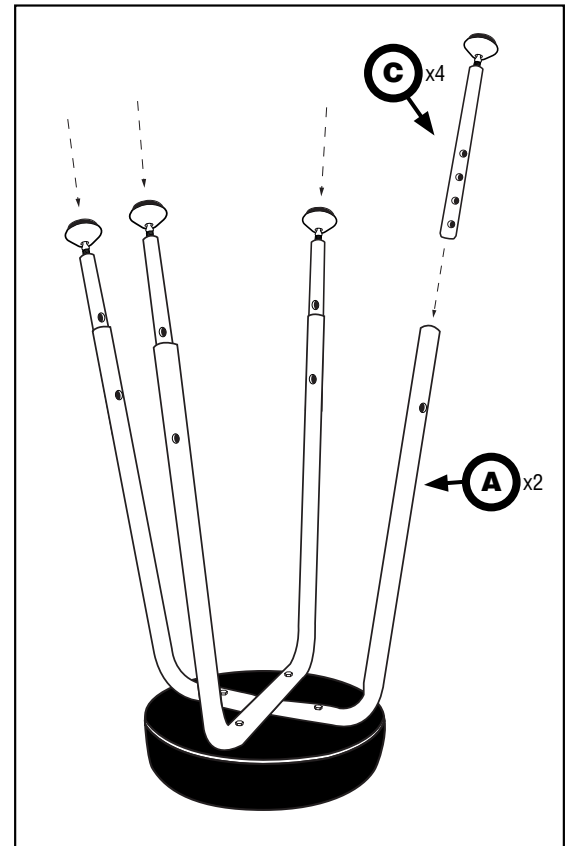


Figure 3

- 5** Slip foot ring (**D**) over leg frame assembly (from cushion end). Align holes in foot ring with holes in U-shaped leg frames and with holes in telescopic leg tubes set at desired height. Secure all four tubes using 2" Allen head leg bolts (**H**) and nuts (**J**). Don't tighten until all four bolts have been inserted. See **Figure 4**.

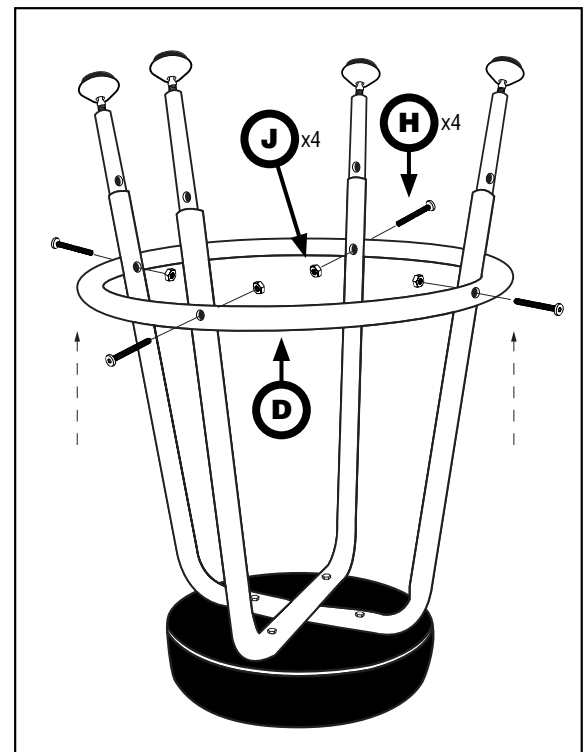


Figure 4

- 6** Tighten all eight bolts securely. Your stool is now ready to use.