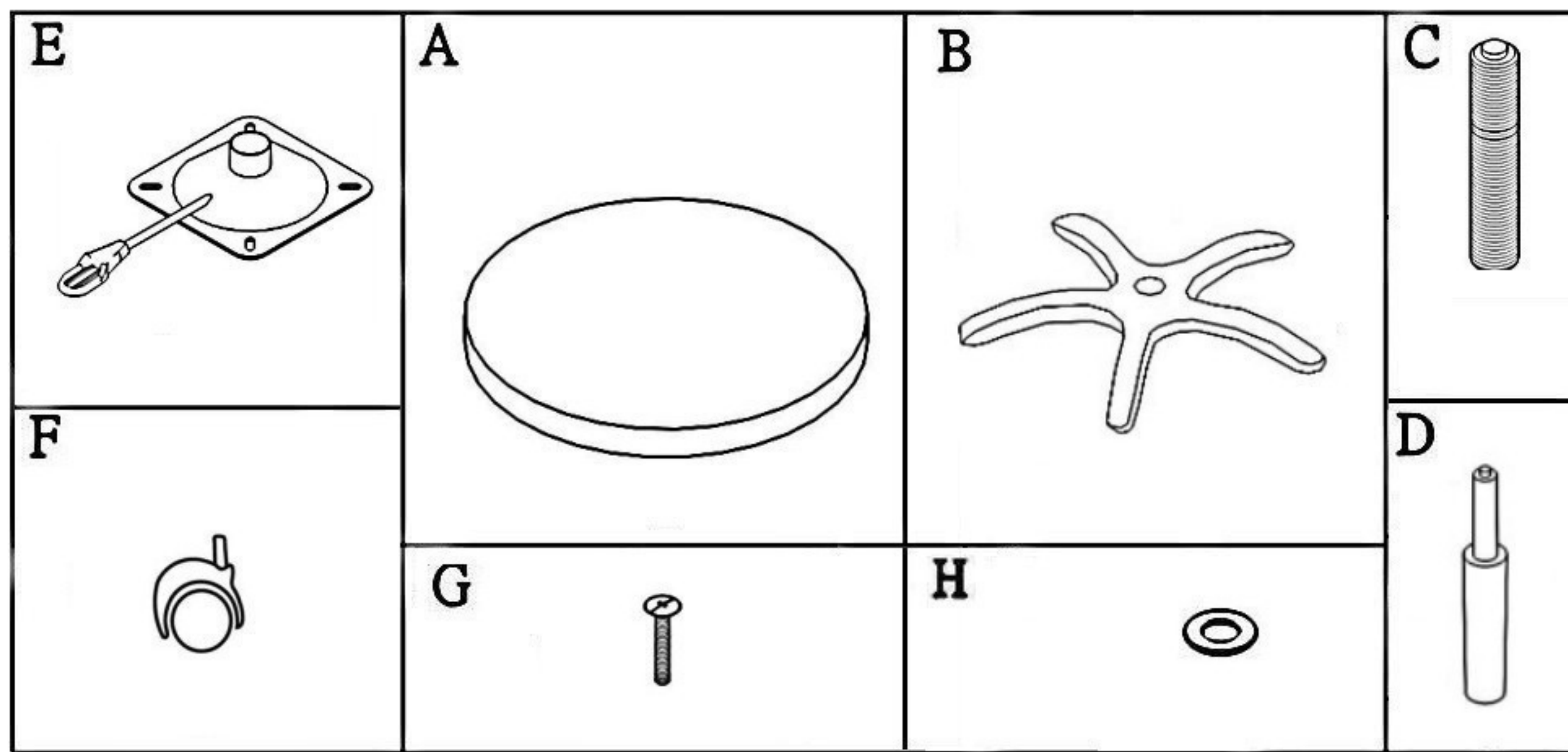


Stool Parts List

Qty

- A. Seat Cushion 1
- B. Star Base 1
- C. Bellows 1
- D. Seat Post 1
- E. Seat Plate 1
- F. Casters 5
- G. Bolts 4
- H. Washers 4



To Assemble Stool

1. Insert casters "F" into star base "B"
2. Insert seat post "D" into center of star base
3. Slide bellows "C" over seat post
4. Attach seat plate "E" to bottom of seat cushion "A" using 4 bolts "G" and 4 washers "H". Tighten securely
5. Place seat assembly on top of seat post and press down firmly

Figure I

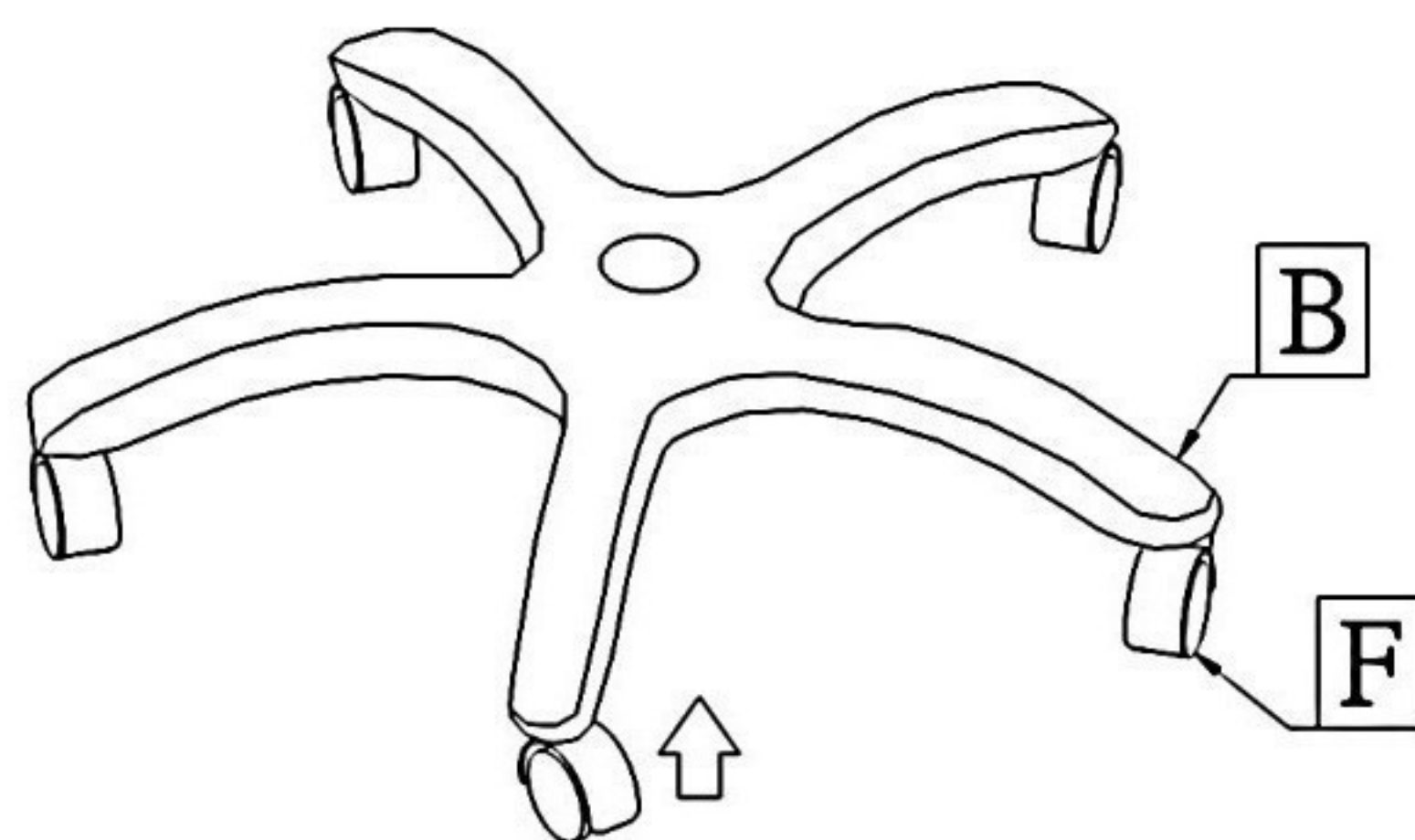


Figure II

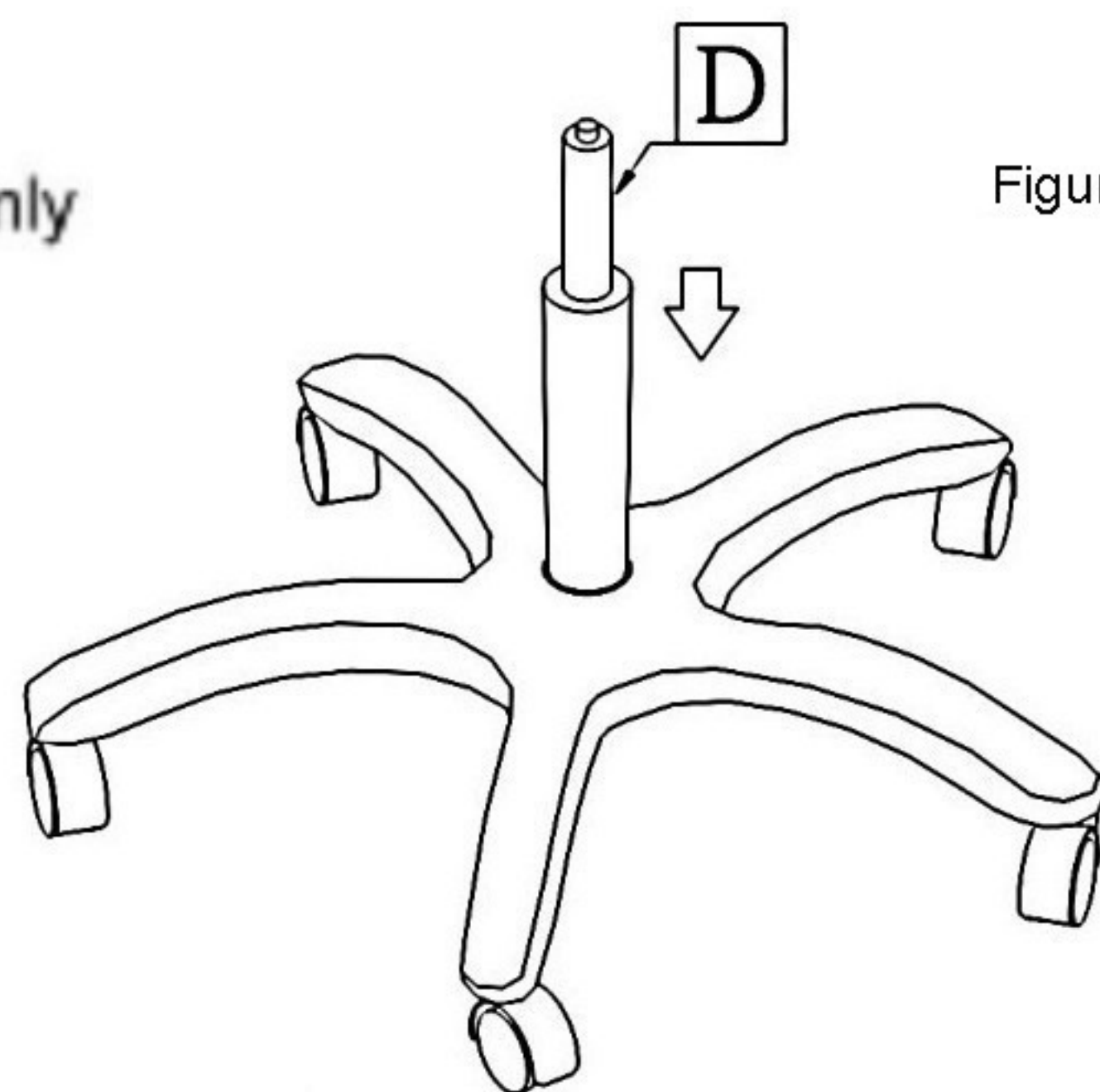


Figure III

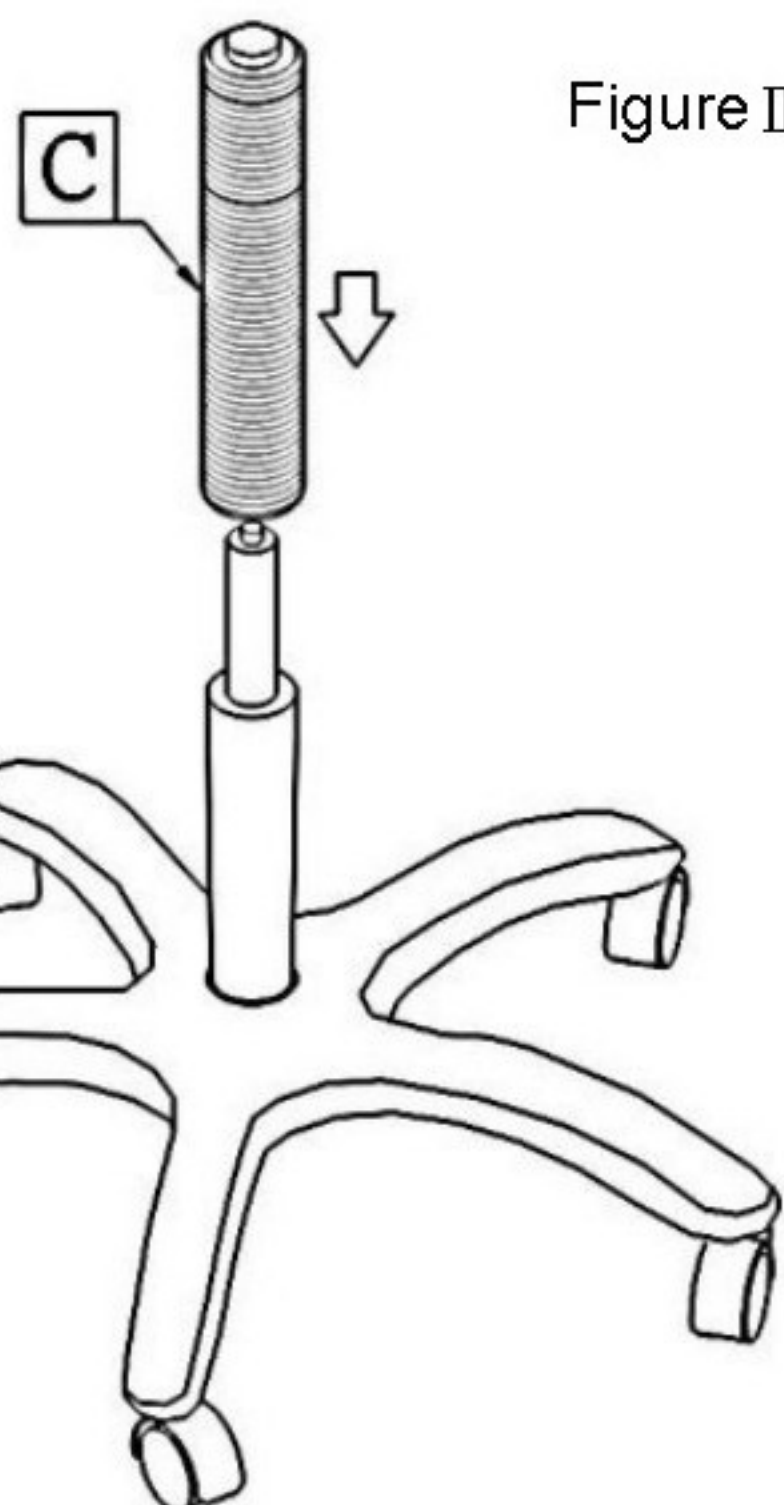


Figure IV

Figure V

